

# MULTITOUCH INSTRUCTIONS

# CyberTouch

## WINDOW / MAC OSX

- 2, 6, 32+ Touch Points
- USB 2.0 (Full speed), compatible with USB 1.1 port, HID compliant,
- Compatible with the following product lines:  
*Rio – Echo – Pico – Matrix – Mono – Photon – Terra – Via - Evo*

## KEEP USB CABLE UNPLUGGED DURING INSTALLATION!

- If the monitor did not come with a Driver CD. Please go to: <http://www.cybertouch.com/multi-touch-drivers/> (Fig.1)
- Download the appropriate driver. (Fig.2)

Fig.1



Fig.2

### MULTI TOUCH DRIVERS



**QUESTION:** What if I need to extend my USB cable?

**ANSWER:** It would be highly recommended to employ our original USB cable to ensure digital signal transmitted correctly.

(Please note the end with "TO PC" label needs to connect to the computer.)

**If you need a USB cable longer than 1.8 meters, please purchase anyone of the recommended extender listed below: (or call us for more info)**

- UNITEK Active Extension Cable Y-262 (up to 20 meters)
- Icron USB 2.0 Ranger 2304 with Cat 5e cables (up to 100 meters)

## MULTI TOUCH DRIVERS



WINDOWS

## Setup: Install

- Locate the downloaded file (*mt\_driver\_kit*) and double click to begin installation. (Fig.1)
- Click *next* on the set up page. (Fig.2)
- Keep the *Destination Folder* as is. And click *Install*. (Fig.3)
- To complete the installation, please save any open files or application(s). Select *Reboot now* and click *Finish*. (Fig.4)

Fig.1

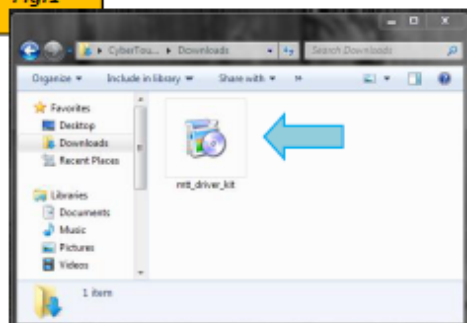


Fig.2



Fig.3

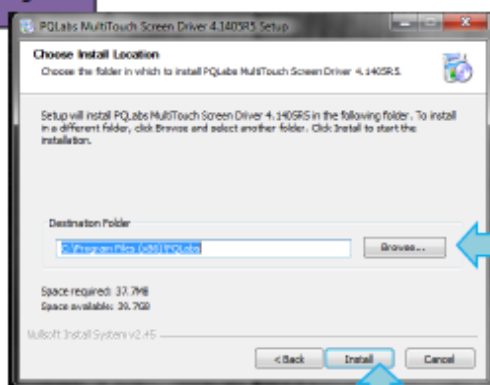
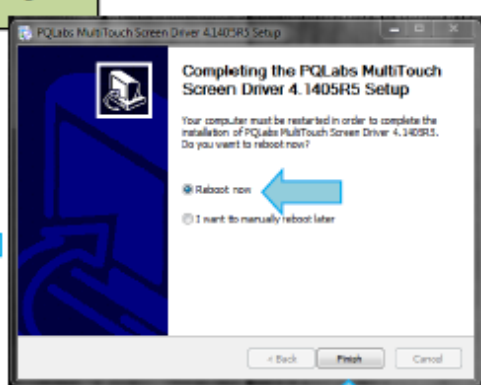


Fig.4



MULTI TOUCH DRIVERS



### Setup: Plug USB/DC Cable

- Once your PC has booted up, plug in the USB cable and power cable that was provided. (note: if your monitor(s) does not have a DC jack, just plug the USB cable) ([Fig.1](#))
- Let Windows finish detecting the device and installing the remaining touch drivers. ([Fig.2](#))
- Once completed, your PC may ask you to **Restart**. If it does not, restart anyways to save current settings. (note: please save any open files then restart your PC.) ([Fig.3](#))

Fig.1

INSTRUCTIONS

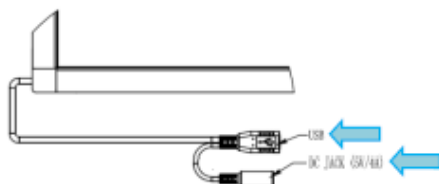


Fig.2

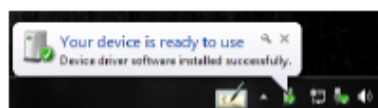
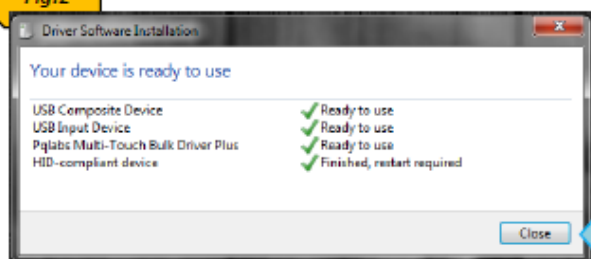
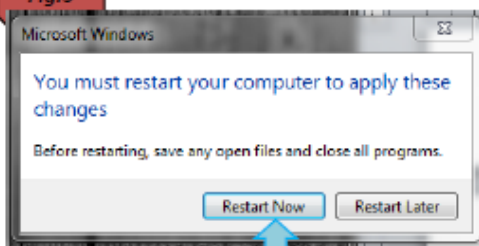


Fig.3



MULTI TOUCH DRIVERS



**Setup: Install**

- Locate the downloaded file (*mt\_driver.dmg*) and double click to begin installation. (*Fig.1*)
- Open *mt\_platform\_setup\_#.####*. (*Fig.2*)
- Continue clicking *Continue* in the setup, then click *Install*. (*Fig.3*)
- To complete the installation, please save any open files or application(s). You will be asked to restart your computer once installation finishes. Click on *Continue Installation*. (*Fig.4*)
- On the *pop up*, click *Allow*. (Note: You may be asked to download or update Adobe Air. Please do so.) (*Fig.5*)
- Once installation is complete your computer will ask you to *Restart*. If not, please do so.

**Fig.1**



**Fig.2**



**Fig.3**



**Fig.4**



**Fig.5**



## MULTI TOUCH DRIVERS



MAC

**Setup: Plug USB/DC Cable And Calibrate**

- Once your PC has booted up, plug in the USB cable and power cable that was provided. (note: if your monitor(s) does not have a DC jack, just plug the USB cable) (Fig.1)
- Go to your *Application* folder and open the *MultiTouch Platform App*.
- Your *Platform* should look similar to this image. (Fig.2)
- Click "**Calibration**" and follow the onscreen instructions.
- If there is any issue, please contact tech support.

Fig.1

INSTRUCTIONS

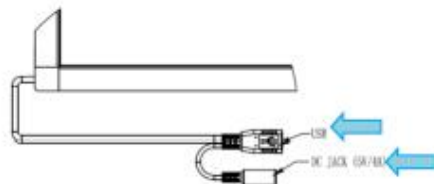
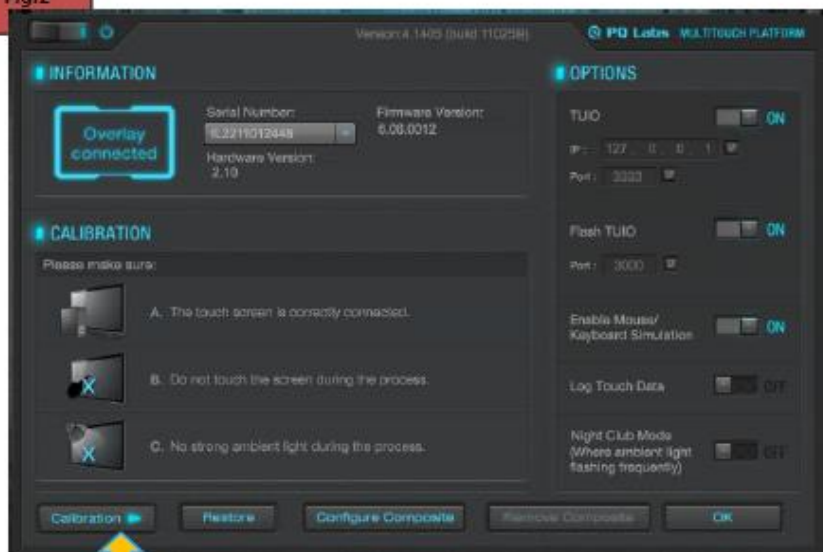
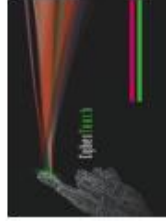


Fig.2





CYBERTOUCH  
853 LAWRENC DR.  
NEWBURY PARK  
CA, 91320



# CyberTouch

